

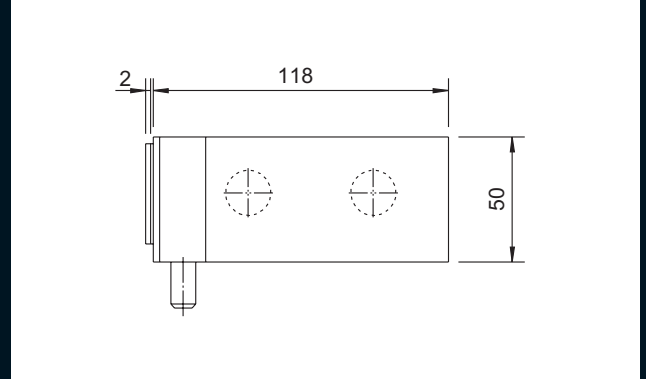
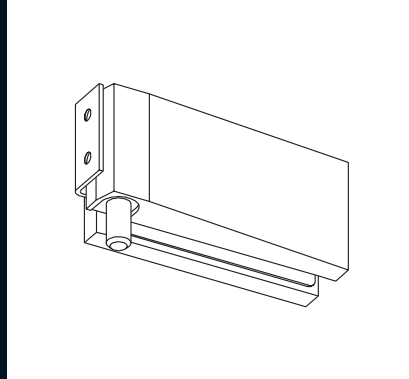


NEWS
QUADRA-CLAUSTRA
CASA

SERIE QUADRA CERNIERE HINGES - BISAGRAS

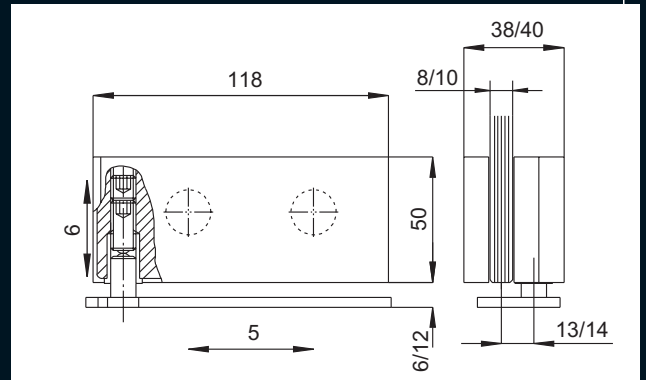
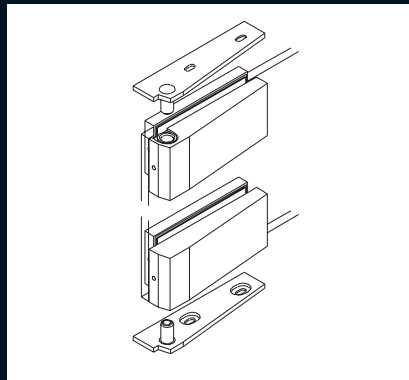
speedy

Mod. 12731/12732



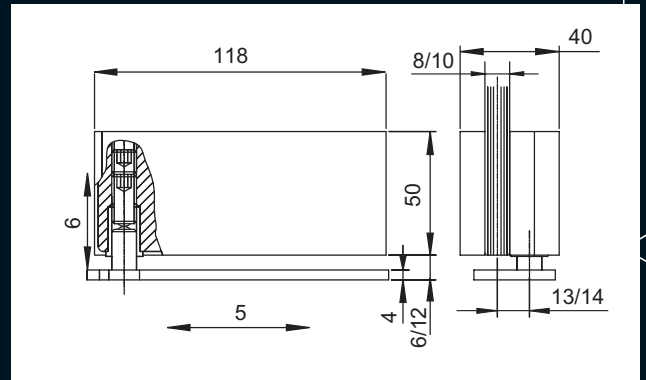
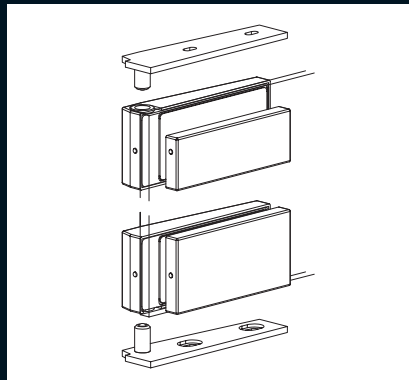
Finiture Disponibili (Available Finishes - Acabados Disponibles)
611 - 612 - 613 - 614 - 615 - 620 - 633 - RAL9010 - 710 - 711 - 712 - 713 - 810 - 812

Mod. 12790



Finiture Disponibili (Available Finishes - Acabados Disponibles)
611 - 612 - 613 - 614 - 615 - 620 - 633 - RAL9010 - 710 - 711 - 712 - 713 - 810 - 812

Mod. 12791



Finiture Disponibili (Available Finishes - Acabados Disponibles)
611 - 612 - 613 - 614 - 615 - 620 - 633 - RAL9010 - 710 - 711 - 712 - 713 - 810 - 812

FINITURE - FINISHES - ACABADOS

Alluminio
Aluminium - Aluminio

	611		620
	612		633
	613		680
	614		RAL 9010
	615		

Ottone
Brass - Latón

	710
	711
	712
	713

Acciaio inossidabile
Stainless Steel - Acero inoxidable

	810
	812

■ Disponibili anche finiture speciali a richiesta

Available also special finishes on request
Acabados especiales también disponibles sobre pedido

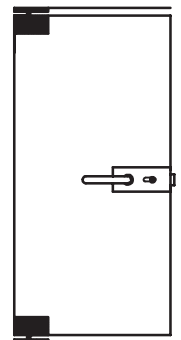
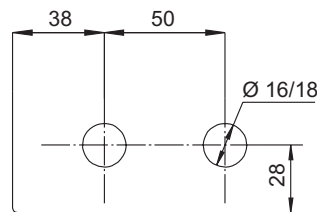
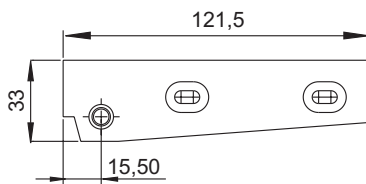
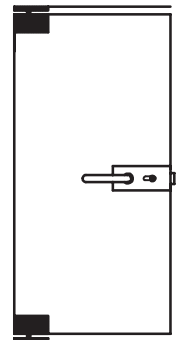
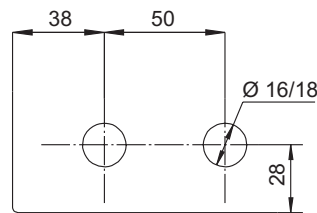
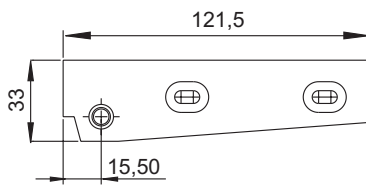
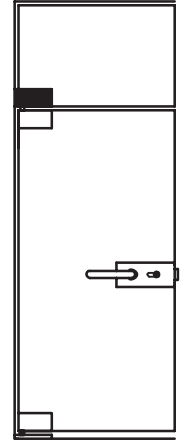
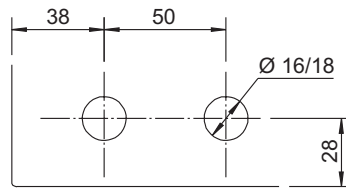
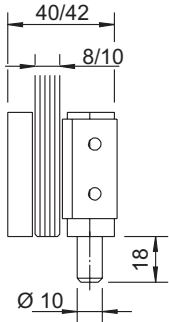
■ Causa limitazioni nel processo di stampa le finiture reali possono cambiare da quelle qui esposte

Due to limitations in the printing process, the actual finishes may differ from those shown here

Por limitaciones en el proceso de impresión, los acabados reales pueden variar de los aquí expuestos

■ Codice prodotto di colore differente mano opposta

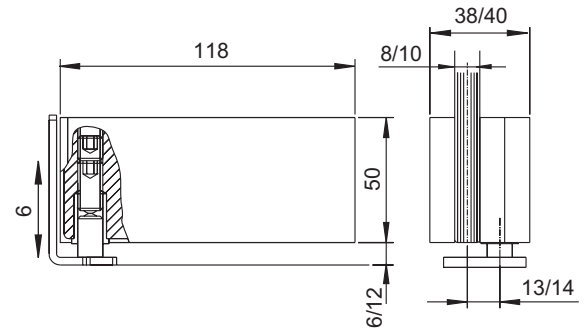
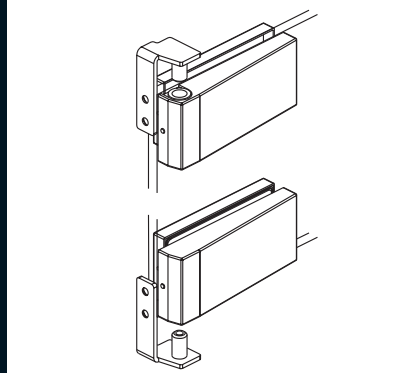
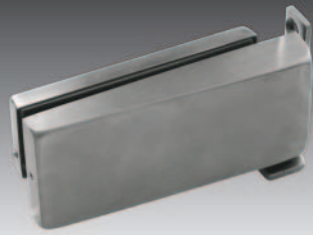
Different coloured product code other hand
Codigo del producto en color diferente mano opuesta



SERIE QUADRA CERNIERE HINGES - BISAGRAS

speedy

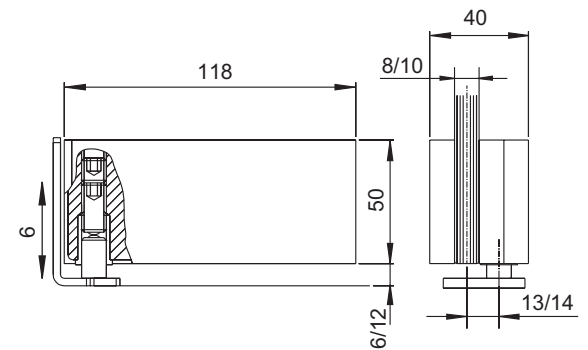
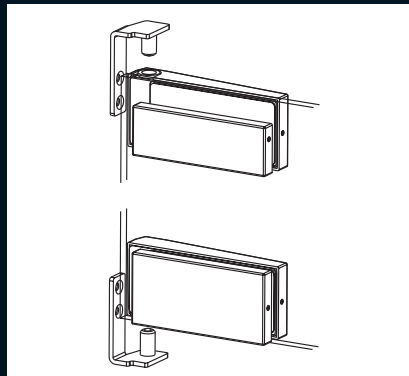
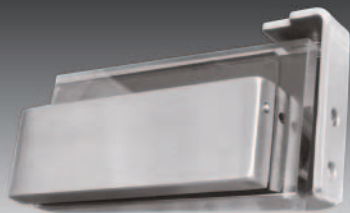
Mod. 12792



Finiture Disponibili (Available Finishes - Acabados Disponibles)

611 - 612 - 613 - 614 - 615 - 620 - 633 - RAL9010 - 710 - 711 - 712 - 713 - 810 - 812

Mod. 12793



Finiture Disponibili (Available Finishes - Acabados Disponibles)

611 - 612 - 613 - 614 - 615 - 620 - 633 - RAL9010 - 710 - 711 - 712 - 713 - 810 - 812

Caratteristiche tecniche - Technical characteristics - Características técnicas	
Spessore del vetro mm - Glass thickness mm - Espesor del vidrio mm	8-10
Spessore del vetro in esecuzione speciale (non per stipiti a norme DIN) <i>Glass thickness in special execution (not for jamb installations regulated DIN)</i> <i>Espesor del vidrio en ejecución especial (sólo para instalaciones con jamba sin norma DIN)</i>	12-1/2"
Peso massimo della porta Kg - Max. door weight Kg - Peso máximo de la puerta Kg	60
Larghezza massima della porta mm - Max. door width mm - Ancho máximo de la puerta mm	1000
Coppia di serraggio raccomandata per viti di fissaggio Nm <i>Recommended torque for fixing screws Nm</i> <i>Momento del cerramiento aconsejado para tornillos Nm</i>	14-16
Peso medio dell'articolo kg - Average item weight kg - Peso medio del artículo kg	0,9
Profondità dello stipite mm - Door jamb depth mm - Espesor de la jamba mm	35

FINITURE - FINISHES - ACABADOS

Alluminio
Aluminium - Aluminio

	611		620
	612		633
	613		680
	614		RAL 9010
	615		

Ottone
Brass - Latón

	710
	711
	712
	713

Acciaio inossidabile
Stainless Steel - Acero inoxidable

	810
	812

■ Disponibili anche finiture speciali a richiesta

Available also special finishes on request

Acabados especiales también disponibles sobre pedido

■ Causa limitazioni nel processo di stampa le finiture reali possono cambiare da quelle qui esposte

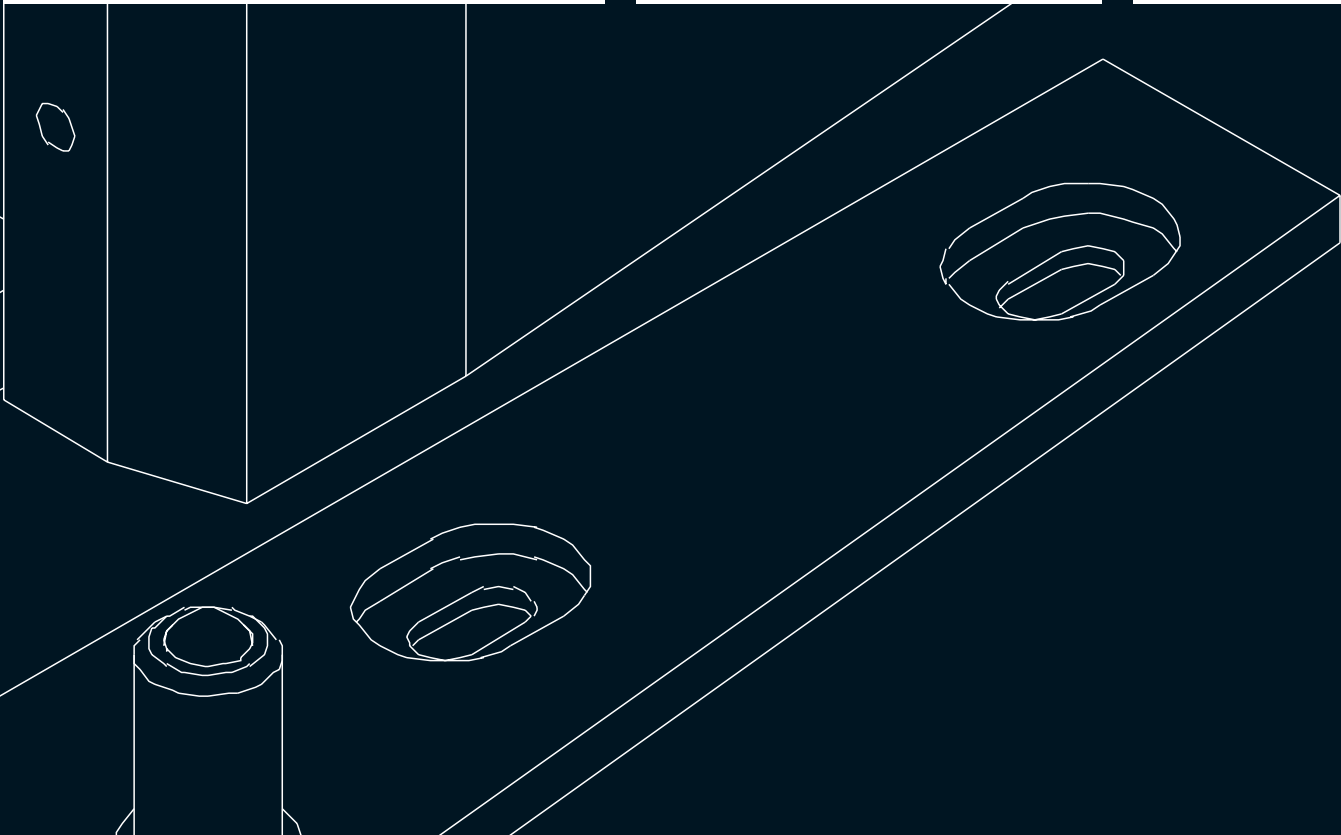
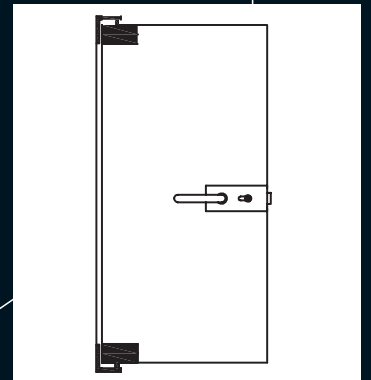
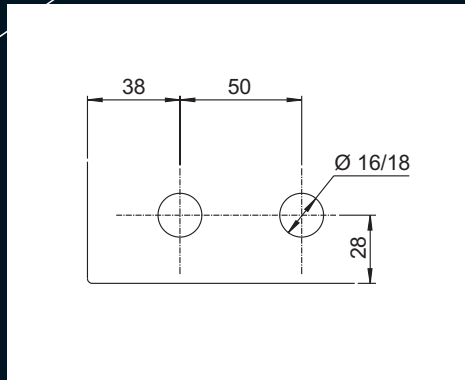
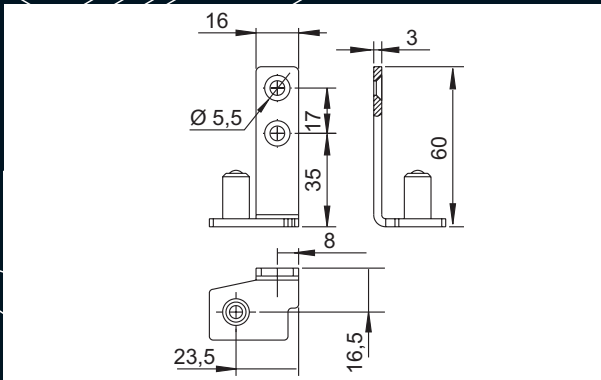
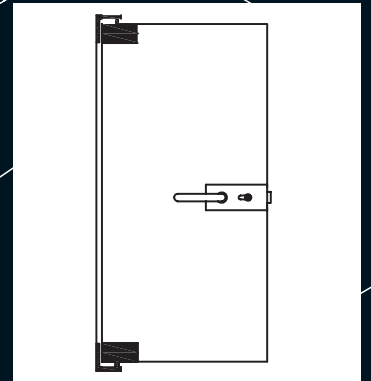
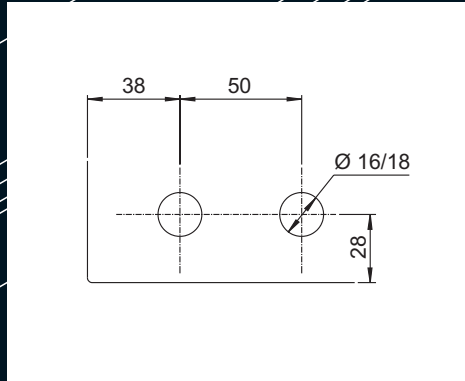
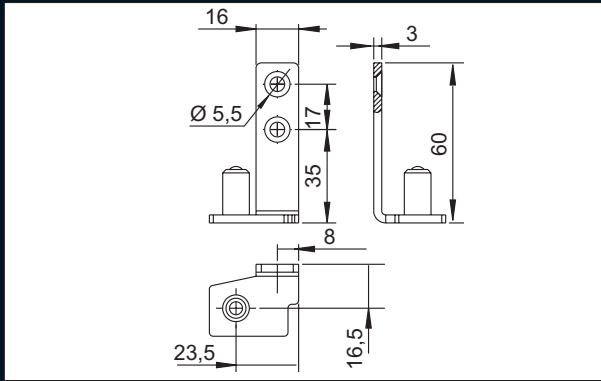
Due to limitations in the printing process, the actual finishes may differ from those shown here

Por limitaciones en el proceso de impresión, los acabados reales pueden variar de los aquí expuestos

■ Codice prodotto di colore differente mano opposta

Different coloured product code other hand

Código del producto en color diferente mano opuesta



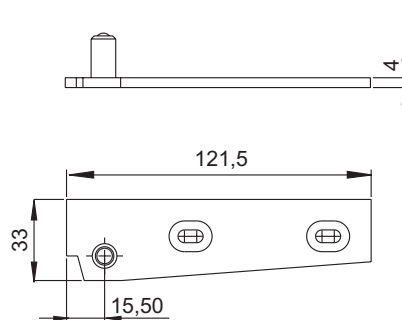
ACCESSORI

ACCESSORIES

ACCESORIOS

speedy

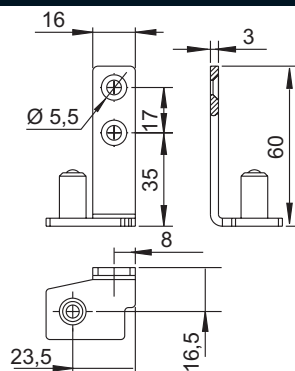
Mod. 12600



Finiture Disponibili (Available Finishes - Acabados Disponibles)

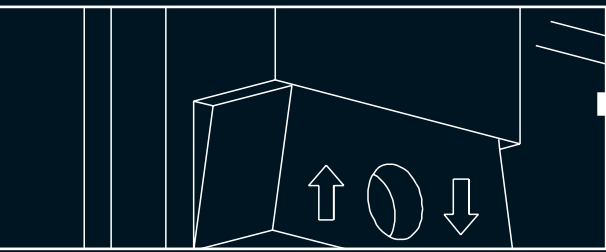
611 - 612 - 613 - 614 - 615 - 620 - 633 - RAL9010 - 710 - 711 - 712 - 713 - 810 - 812

Mod. 12611



Finiture Disponibili (Available Finishes - Acabados Disponibles) 800



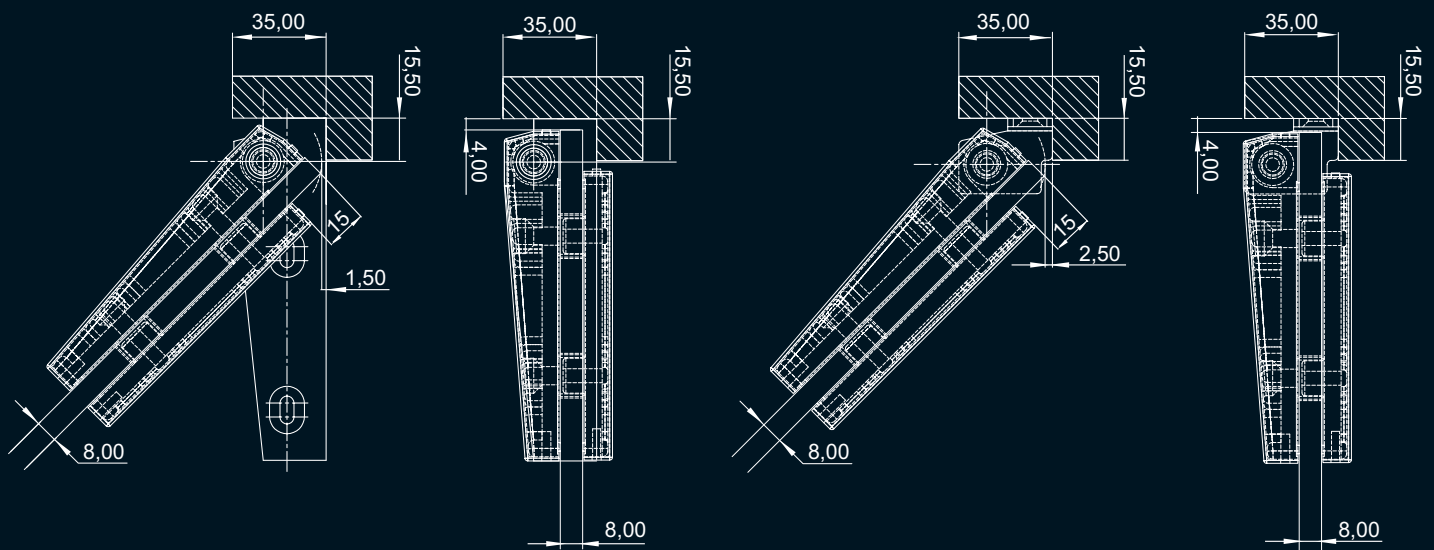


sezione **TECNICA**

TECHNICAL section
sección TÉCNICA

Installazione delle cerniere e delle serrature su stipiti

Hinges and locks installation with jamb
Instalación de bisagras y cerraduras con jambas

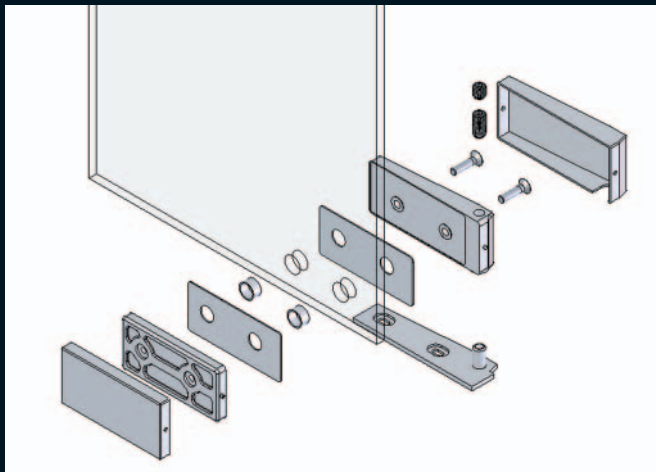


Installazione delle cerniere con fissaggio a pavimento e allo stipite in alto

Installation on the top jamb and on the floor
Instalación a la jamba superior y en el suelo

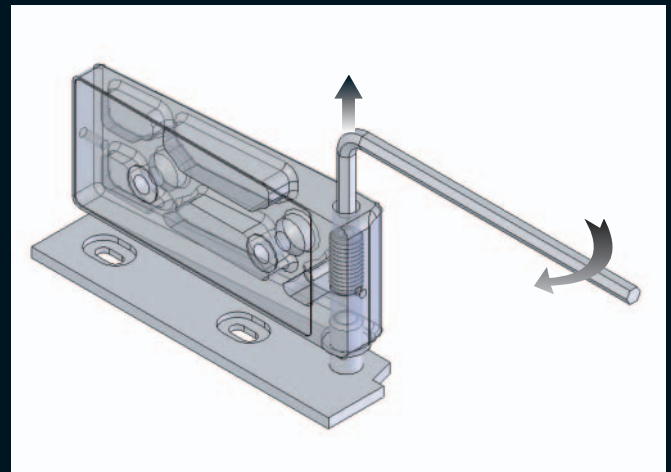
Esploso cerniera 12790

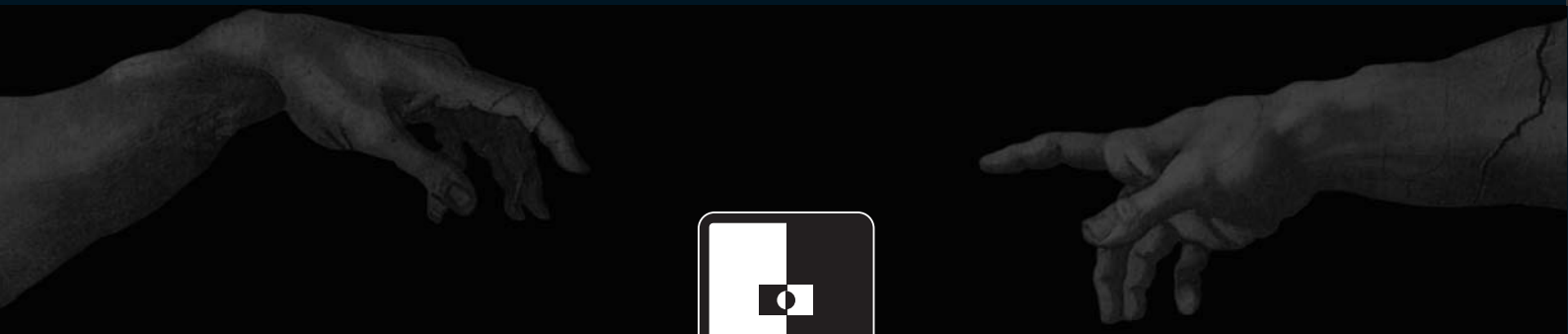
Hinge assembly 12790
Montaje de bisagra 12790



Regolazione verticale (6mm) cerniera 12790

Vertical adjustment (6mm) of hinge 12790
Regulación vertical (6mm) de bisagra 12790





CASMA

CASMA S.p.A.

Via Primo Maggio, 86 - 20013 **MAGENTA (MI) - Italy**
ph. +39 02 97298418 - fax +39 02 97299006
www.casma.com - casma@casma.it

10
06
04

CASMA si riserva il diritto di modificare i propri prodotti senza preavviso.

CASMA reserves the right to make modifications without notice.

CASMA se reserva el derecho de hacer modificaciones sin previo aviso.