



fluxo
by **CASMA**

Glass Wall

FLUXO



Fluxo

- Fluxo è la linea di scorrevoli in acciaio inossidabile design minimale, facile da installare, disponibile per un'ampia gamma di configurazioni.

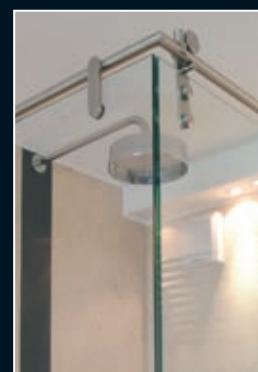
Dimensioni massime dell'anta (L x H x spessore del vetro): 110cm x 270cm x 10mm

- Fluxo is the naked stainless steel sliding system with minimal design, easy to install, available for a wide range of solutions.

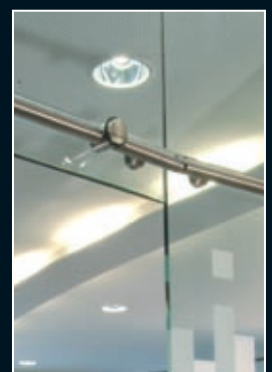
Maximum Wing Dimensions (W x H x glass thickness): 110 cm x 270cm x 10mm

- Fluxo es la línea de correderas en acero inoxidable con diseño minimalista, facilidad de instalación y con disponibilidad para una amplia gama de configuraciones.

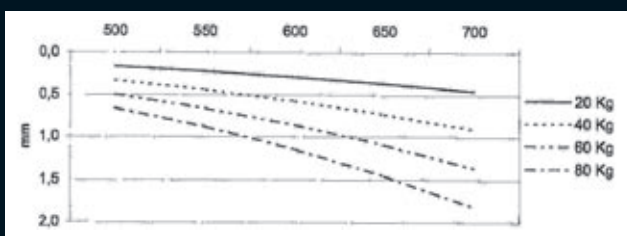
Dimensiones máximas de la puerta (L x H x espesor del cristal): 110 cm x 270cm x 10mm



Installazione in docce
Shower Cabin Installation
Mampara de baño

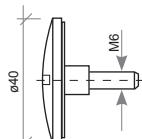


Installazione curva raggio min. 150cm
Bended installation
min. radius 150cm
Instalación curvada
radio min. 150cm

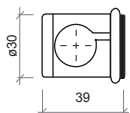


Flessione della guida superiore - Upper track inflexion - Inflesión della guía superior

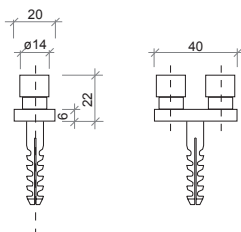
Fluxo Technology



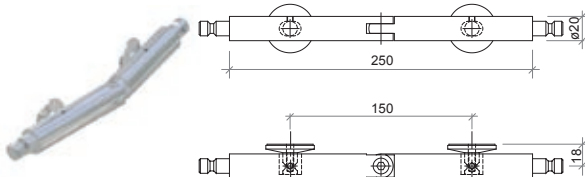
ST 2104: Punto di fissaggio a vetro della guida sup.
Upper Track Glass Fixing Point
Accesorio para el fijaje de la guía al vidrio



ST 2190: Fermo laterale
Stopper / Stopper

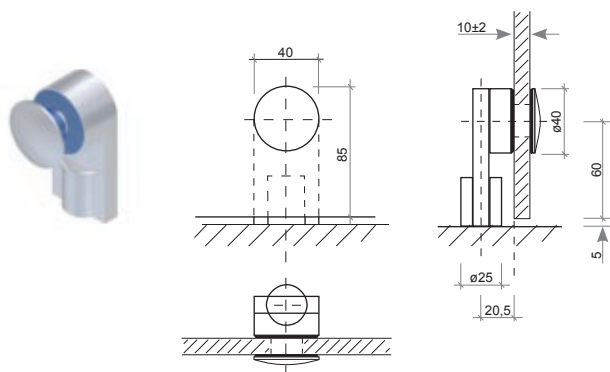


ST 3108: Guida a pavimento
Floor Guide / Guía para suelo

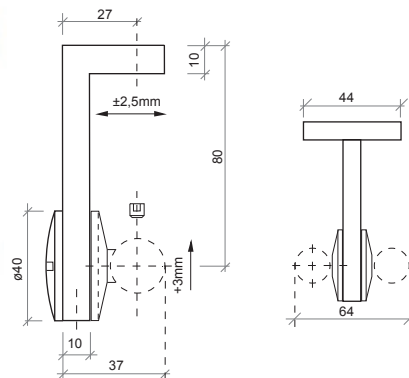


ST 2033: Giunto snodabile per guida sup.
Adjustable upper track connector
Accesorio para ángulo variable

ST 2036: Angolo a 90° fisso
90° fixing joint / Ángulo a 90° fijo

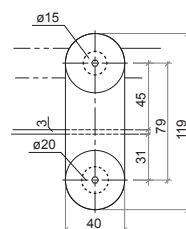


GV 200: Fissaggio vetro
Glass Fixing Point / Accesorio para el fijaje del vidrio

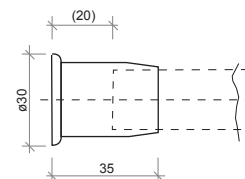


ST 2180

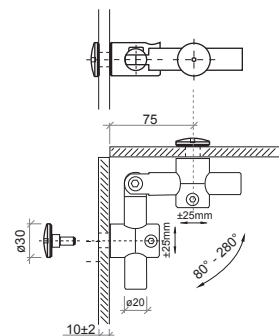
ST 2185: Supporti a soffitto per guida sup.
Upper track support to the ceiling
Accesorios para el fijaje de la guía al techo



ST 2160: Ancoraggio fisso laterale alla guida
Fixed Panel fixing point to the upper track
Accesorio para el fijaje de la guía al panel fijo lateral



ST 2175: Fissaggio guida al muro laterale
Upper Track support to the side wall
Accesorio para el fijaje lateral de la guía a la pared



GV 100: Fissaggio due vetri snodabile
Adjustable two glasses connector
Accesorio para el fijaje de dos vidrios con ángulo variable

Glass Wall

La guida superiore non è in un unico pezzo:

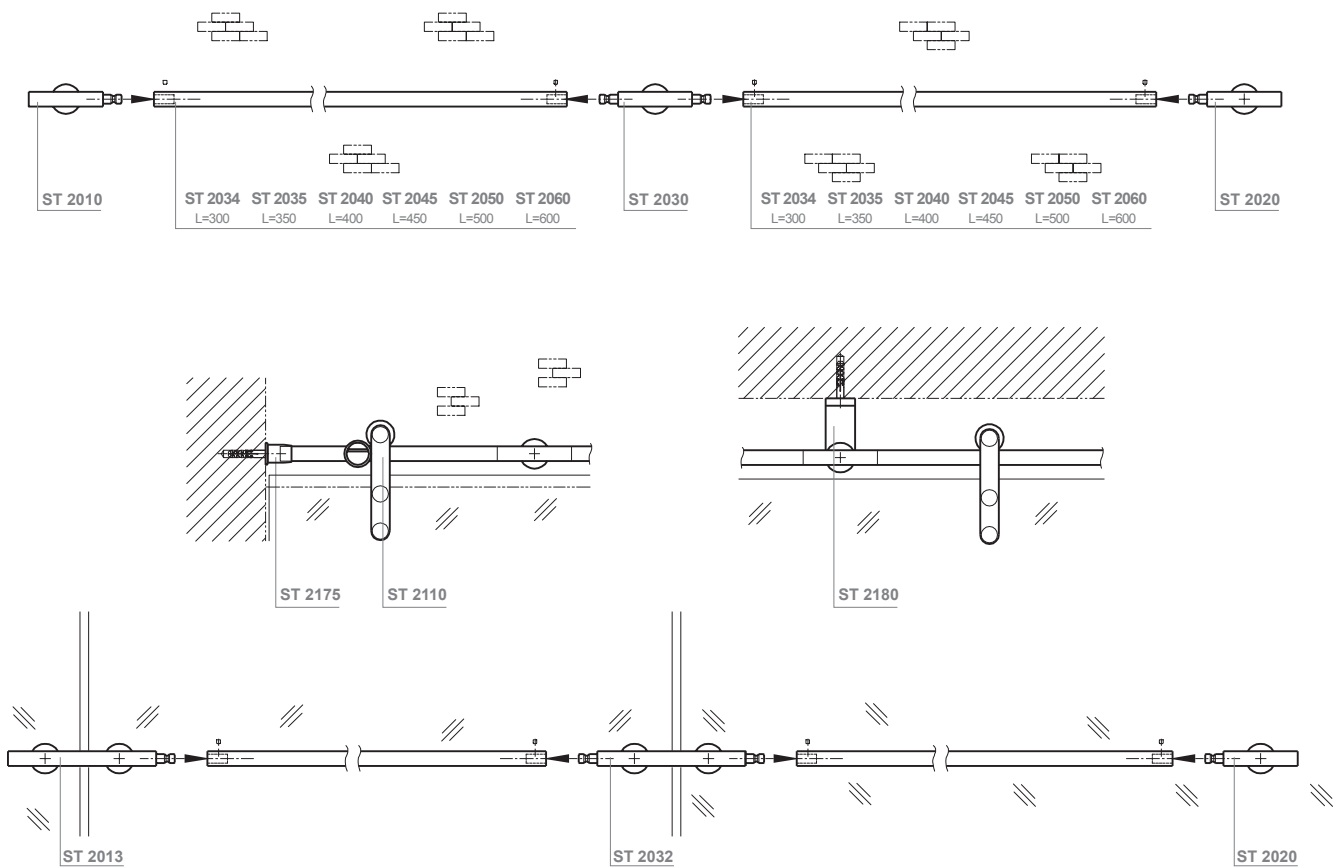
per agevolare i trasporti e l'installazione è componibile. In ogni caso oltre alle dimensioni standard si possono comporre i vari moduli per poter ottenere lunghezze secondo le specifiche del cliente.

The upper track is not an entire rod:

to make the installation and the delivery easier it is made modular. Standard and cut to size modules are available.

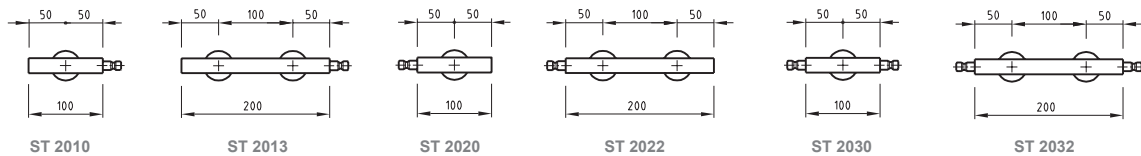
La guía superior no está compuesta de una sola pieza: para facilitar su transporte y su instalación está dividida en partes.

En cualquier caso para dimensiones standard se puede componer en varios módulos para poder obtener la longitud en función de las especificaciones del cliente.



FLUXO - Accessori

Accessories
Accesorios

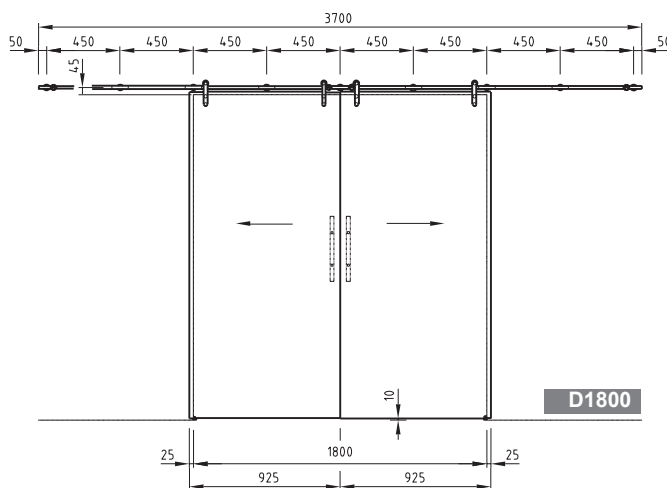
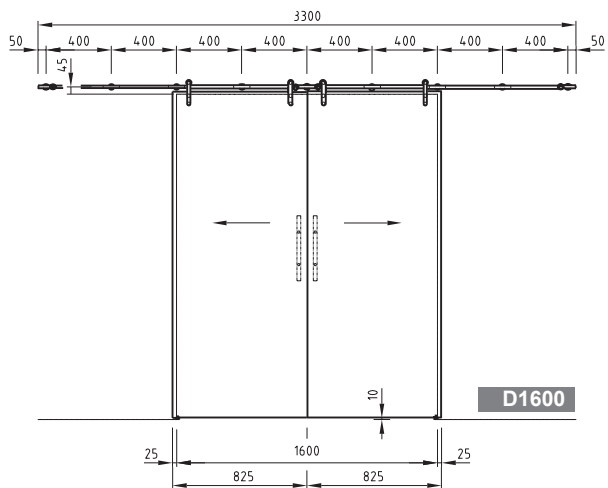
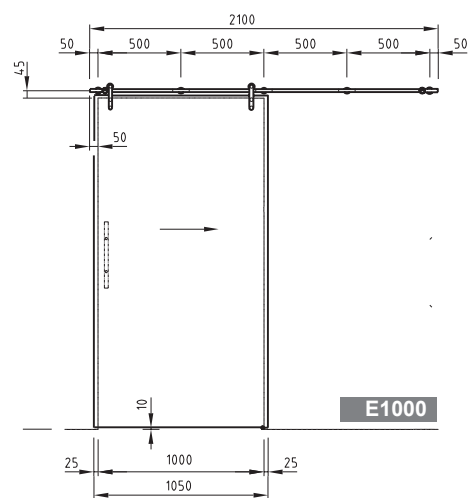
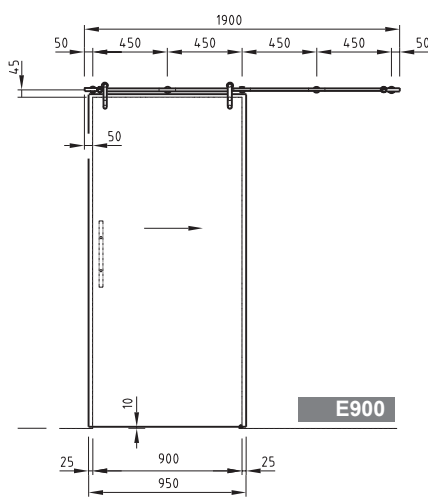
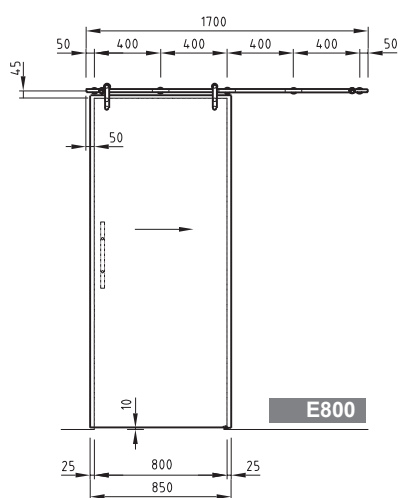


Fluxo Technology

Installazioni con fissaggio al muro

Wall fixed installations

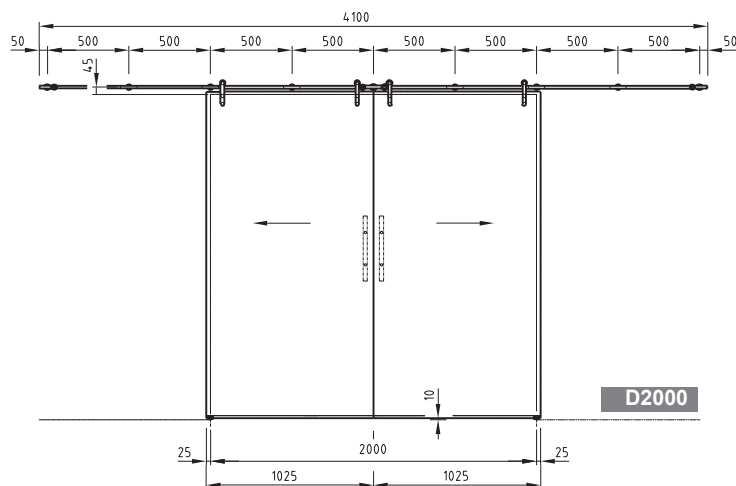
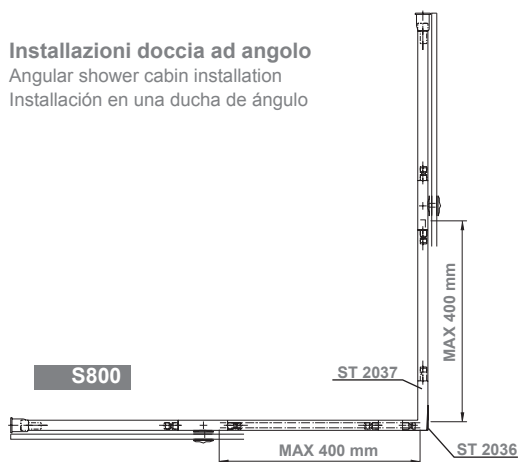
Instalaciones con fijaje a la pared



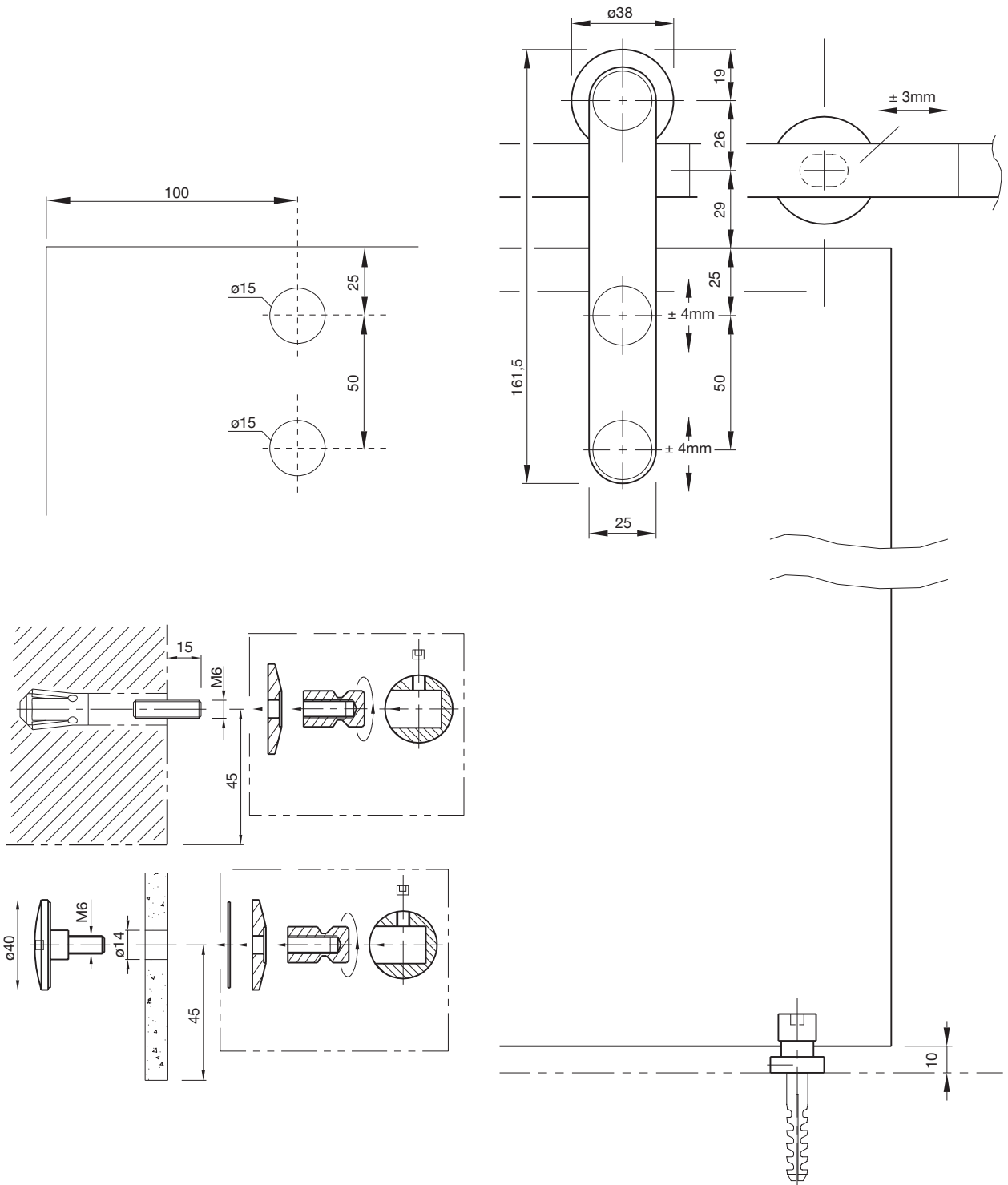
Installazioni doccia ad angolo

Angular shower cabin installation

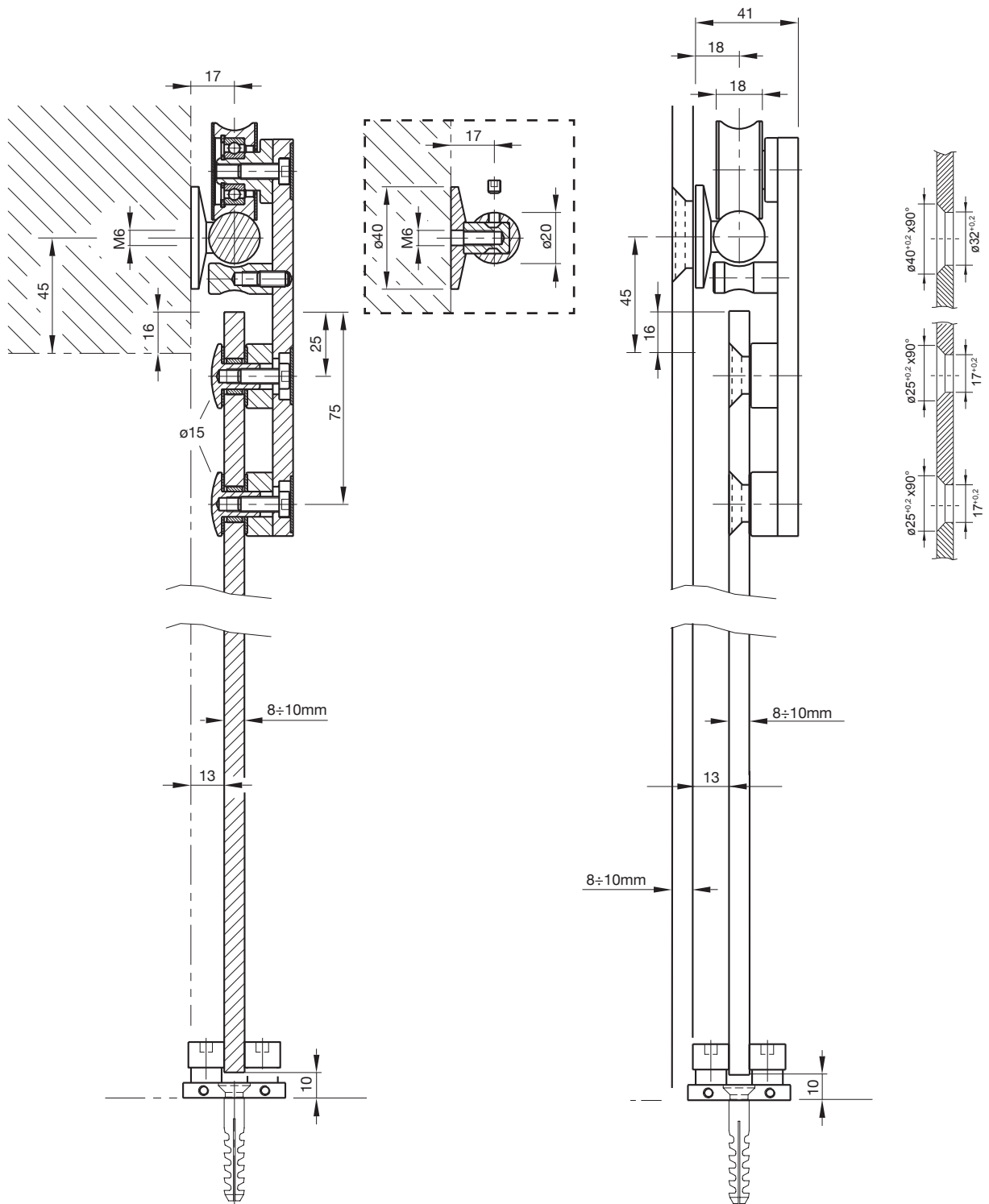
Instalación en una ducha de ángulo



Glass Wall



Fluxo Technology





CASMA S.p.A.

Via Primo Maggio, 86 - 20013 **MAGENTA** (MI) - Italy
ph. +39 02 97298418 - fax +39 02 97299006
www.casma.com - casma@casma.it